

AZL Workgroup

AZL is the
OFFICIAL CENTER of



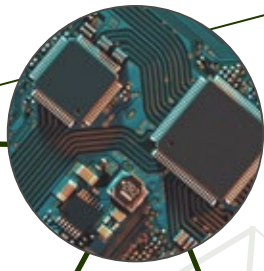
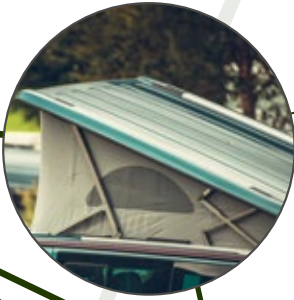
for Composite-based
LIGHTWEIGHT
PRODUCTION

High- Performance SMC

Expert &
Business
Community



Join an extensive partner network exchanging on technologies for developing and producing high-value parts from sheet molding compounds



Based on a Joint Market and Technology Study on "High-Performance SMC" the road-map was further developed and a multitude of projects to expand knowledge and demonstrate the potential of high-performance SMC have been initiated.

<p>Design & Modelling</p>	<p>Mechanical characterization</p>	<p>Reinforcing effect</p>
<p>One shot co-molding</p>	<p>Close-up of the test</p>	<p>Cost-improvement ratio</p>
<p>Potential application</p> <p>AZL Aachen GmbH</p>		

Connecting Science, Engineering and Production

The aim of the workgroup is to showcase and evaluate the potential of sheet molding compounds for manufacturing high-performance parts. The introduction of carbon fibers, high-performing resins and the combination of long-fiber-reinforced compounds with continuous fibers opens new high-value applications for SMC. The AZL Workgroup connects end-users and providers of latest material and production technologies for high-performance SMC.

Roadmap & Topics

After characterization of materials of different SMC types, methods for fast and reliable prediction of components and processes, and evaluation of

improved bonds of reinforced fibers to the resin matrix and new resins, the roadmap consists of the following work packages:

**Virtual Part and
Process Design**

**Use Case
Identification**

**Recycling &
Sustainability**



Impulses for
Research



Identification of
Pre-Competitive Topics



Initialization of
Projects



Meeting every
6 Months



Find more information about our AZL Workgroups

In cooperation with



What our Workgroup is all about

The primary goal of the AZL Workgroups is to network active partners from research and industry, from production and application development in the field of high-performance sheet molding compounds.

The activities go far beyond pure networking. The definition of real goals and initiatives and the regular exchange lead again and again to new processes, products and collaboration and make the AZL Workgroups so unique.

Business Platform "High-Performance SMC"

AZL Business Platforms were built in addition to the r&d activities of AZL Workgroups and provide you with details on lightweight technologies: Get focused information on highlight lightweight technologies, find a broad range of service and products along the entire value chain, explore use cases to learn on present realized applications and technology solutions, contact your business partners for your individual lightweight solution.

Visit us at www.high-performance-smc.com

Join the Network of more than 80 active Partners:



About AZL

AZL stands for excellence in lightweight production. As a one stop shop for market and technology know how, the senior staff of AZL brings together experts and decision makers from academia and industry to support business and technology development for the lightweight industry. We support you, regardless of your position in the value chain, in the development, benchmarking and improvement of your design methodologies, manufacturing techniques and products.



Workgroup Leader
Alexander Knauff
+49 241 475 735 - 16
alexander.knauff@azl-aachen-gmbh.de



Senior Project Manager
Philipp Fröhlig
+49 241 475 735 - 14
+49 176 80488799
philipp.froehlig@azl-aachen-gmbh.de